

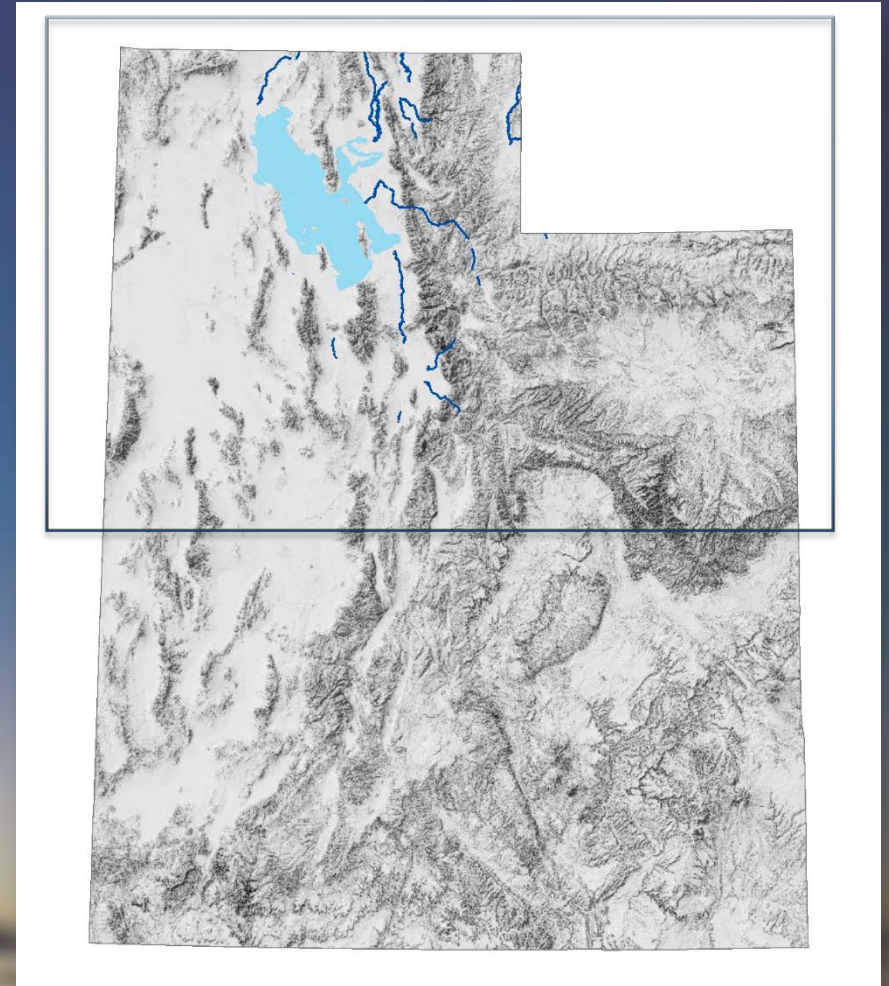
Water Resources of Northern Utah – Web Application



Chelsea Welker
April 24, 2016

Geographic Area

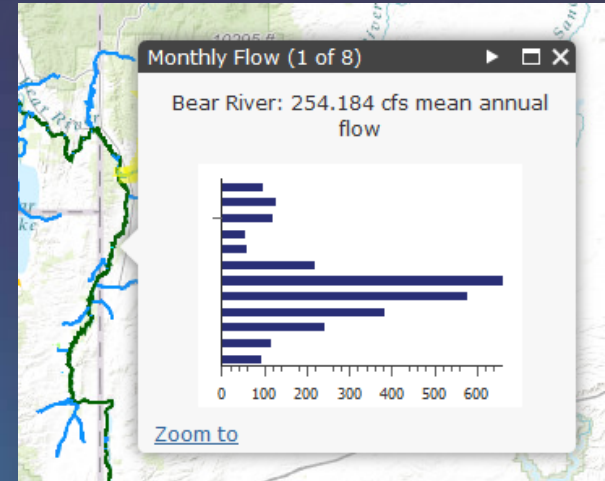
- Northern Utah
- Great Salt Lake Watershed Boundary
- Rivers that drain into GSL and municipal water use of this surface water



Service Types

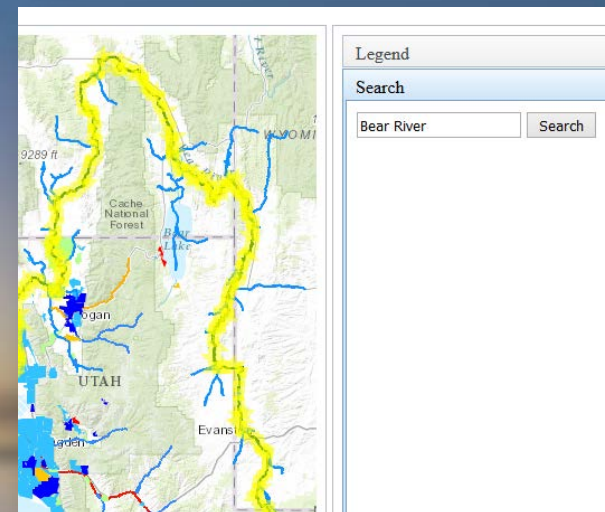
Map Services

- Basemap
 - Location map of study area
- Spatial Identify Popup Chart
 - Selected river feature pop-out shows chart for 12 month river flow



Data Service

- Search
 - Search for river name



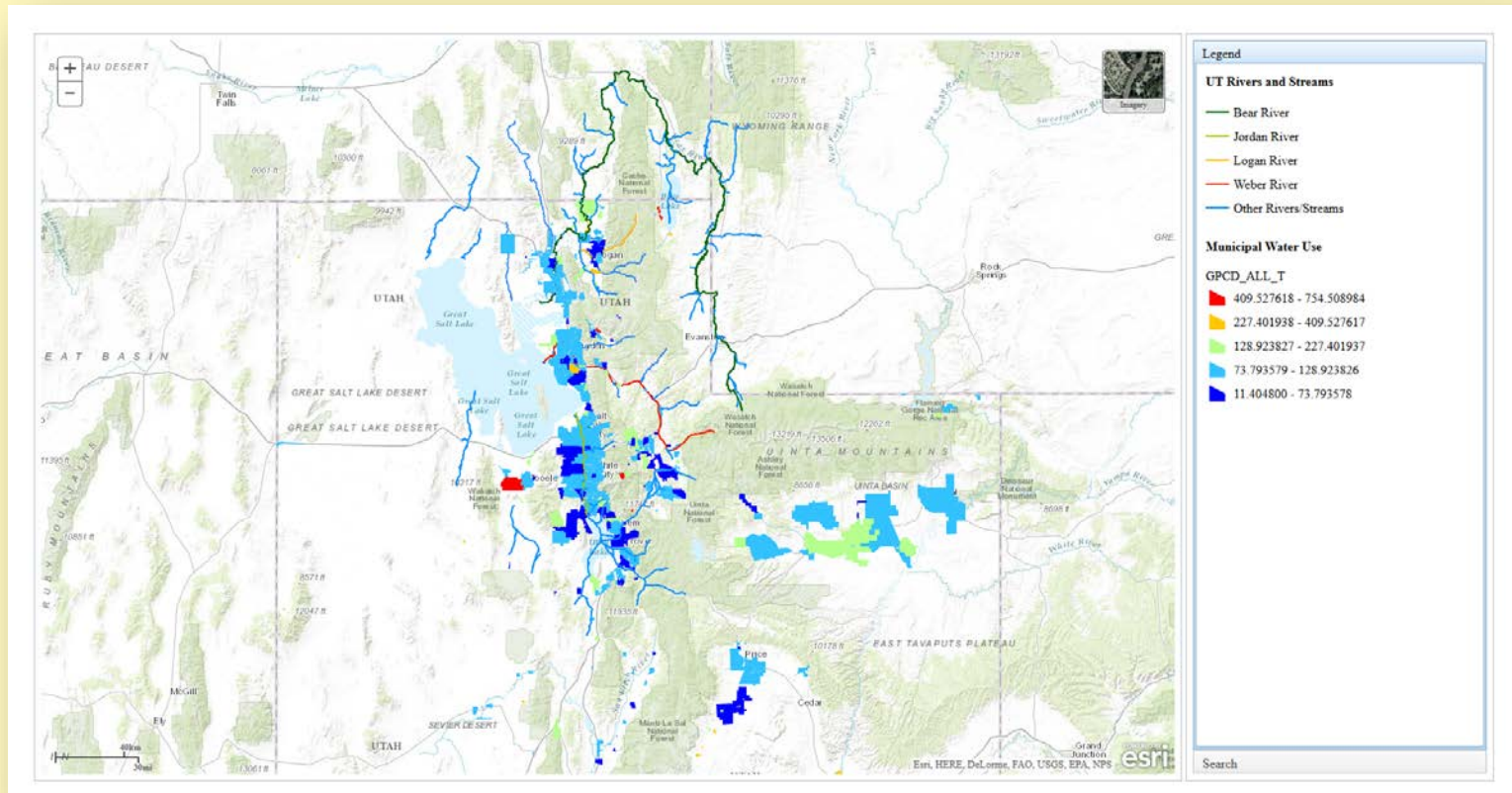
Challenges

- Where do I begin?
- Map service
 - Locating on the center of study area
- Popup Chart
 - Reading the correct feature field for the template
- QueryTask
 - Sample is for points, web app is polylines
 - Spatial reference of selected features didn't match
 - Graphic variable ambiguous in sample
- Not enough coffee

Lessons Learned

- Don't forget to replace variable names and functions in all the different places in html
- Order matters (require, parameters etc.)
- Syntax errors give migraines
- Classes and indexes make me sad
- Don't code after midnight, too many mistakes and everything takes twice as long
- Respect for programmers!

The App



http://content.csbs.utah.edu/~u0070231/welker/GEOG6165/index_welker.html